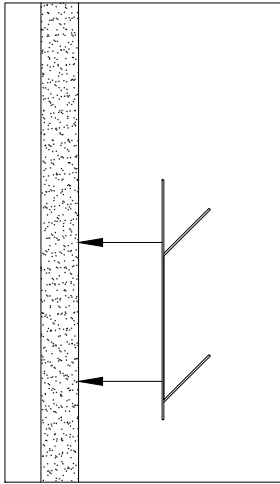
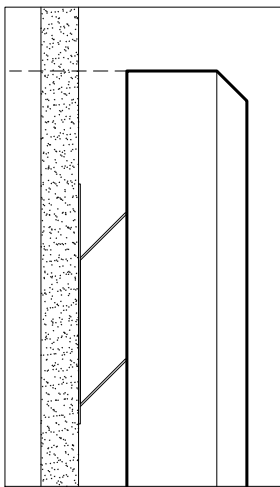


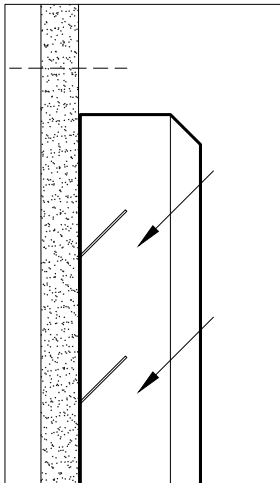
| QTY./LENGTH |     |     |     |     |
|-------------|-----|-----|-----|-----|
|             | 24" | 48" | 72" | 96" |
| 24"         | 4   | 4   | 6   | 8   |
| 48"         | 4   | 4   | 6   | 8   |
| 72"         | 6   | 6   | -   | -   |
| 96"         | 8   | 8   | -   | -   |



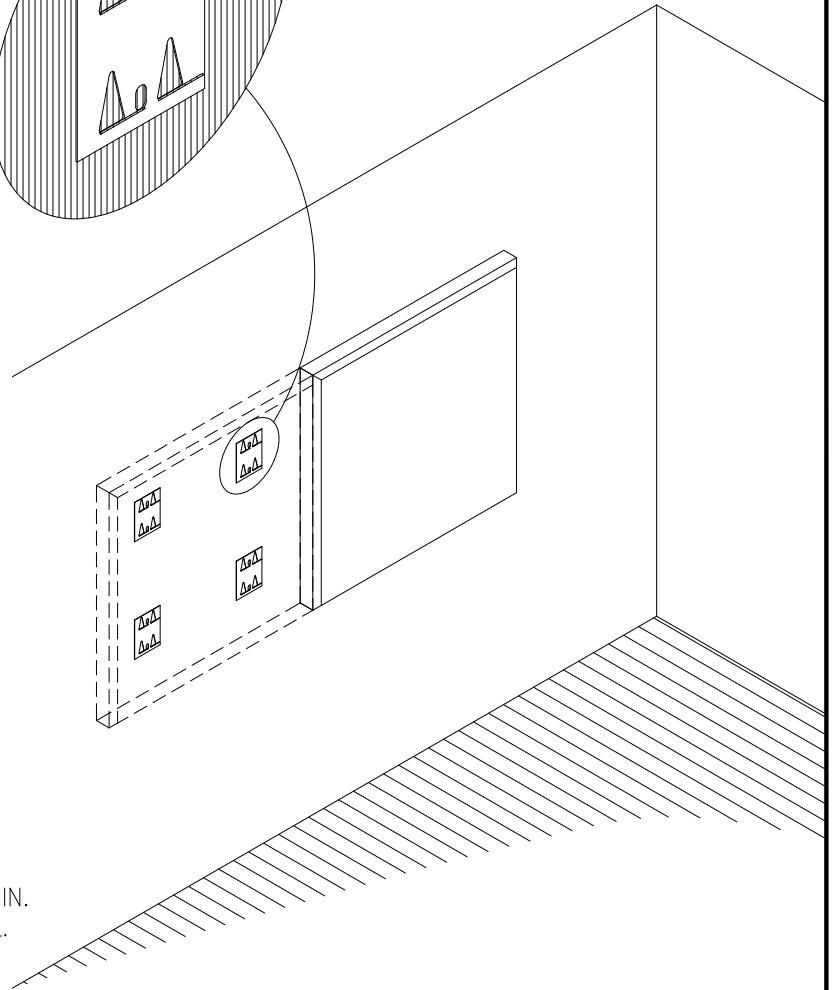
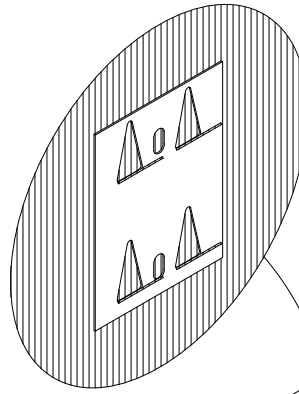
ATTACH IMPALING CLIPS TO WALL.



DRAW A LINE 1" ABOVE DESIRED HEIGHT.  
GENTLY REST PANEL AGAINST CLIPS MAINTAINING LEVEL WITH LINE.



PUSH FIRMLY DOWN & IN.  
PIERCE BACK OF PANEL.



99 SOUTH STREET, PASSAIC, NJ 07055

(p) 973-916-1166 (e) estimating@rpgacoustic.com

Title: RPG B.A.D PANEL MOUNTING  
# 1 IMPALING CLIP

Proj: RPG PRODUCT

Date: 08/19/22

By: CNN

Scale: NTS

Comments:

---



---

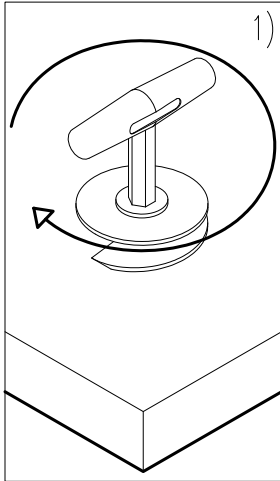


---



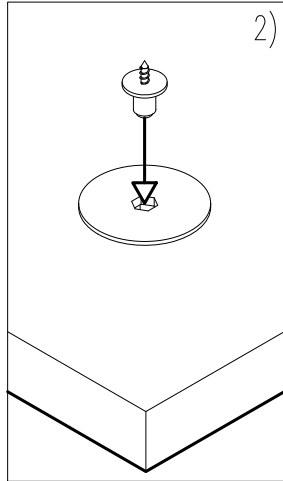
---

Path: F:\Project Mgmt - RPG\RPG PRODUCTS\ALL PRODUCTS DRAWING\BADP\_BAD Panel\2 - PDF Drawings\Mounting



1)

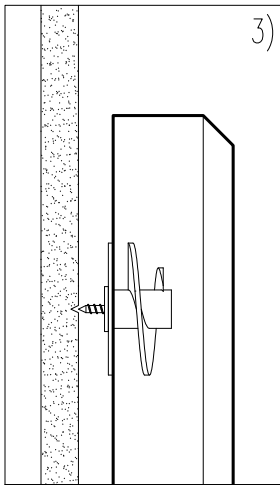
ATTACH ROTOFAST™ ANCHOR



2)

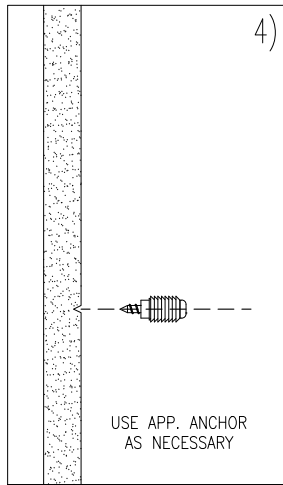
INSERT MARKER SCREW

|     |  | QTY./LENGTH |     |     |     |
|-----|--|-------------|-----|-----|-----|
|     |  | 24"         | 48" | 72" | 96" |
| 24" |  | 4           | 4   | 6   | 8   |
| 48" |  | 4           | 4   | 6   | 8   |
| 72" |  | 6           | 6   | -   | -   |
| 96" |  | 8           | 8   | -   | -   |



3)

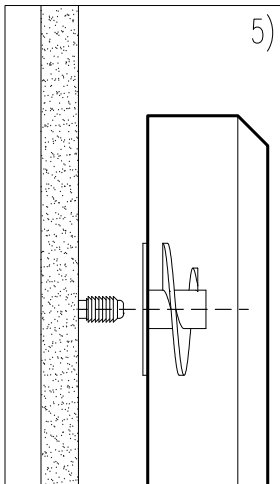
MARK WALL



4)

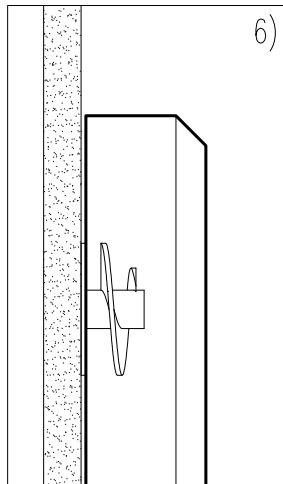
MOUNT STUDS

USE APP. ANCHOR  
AS NECESSARY



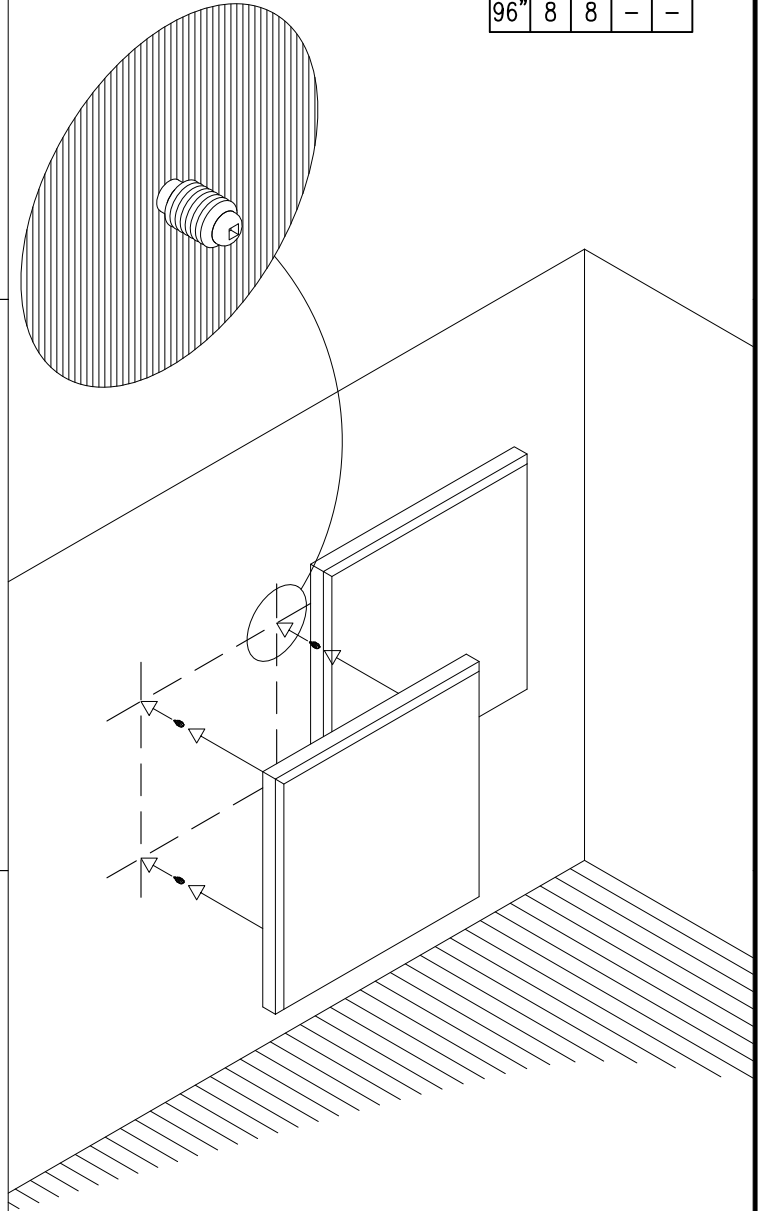
5)

REMOVE MARKER SCREW



6)

SNAP PANEL ONTO STUDS



ACOUSTICAL SYSTEMS - LLC

99 SOUTH STREET, PASSAIC, NJ 07055

(p) 973-916-1166 (e) estimating@rpgacoustic.com

Title: RPG B.A.D PANEL MOUNTING  
# 4 ROTOFAST SNAP-ON

Proj: RPG PRODUCT

Date: 08/19/22

By: CNN

Scale: NTS

Comments:

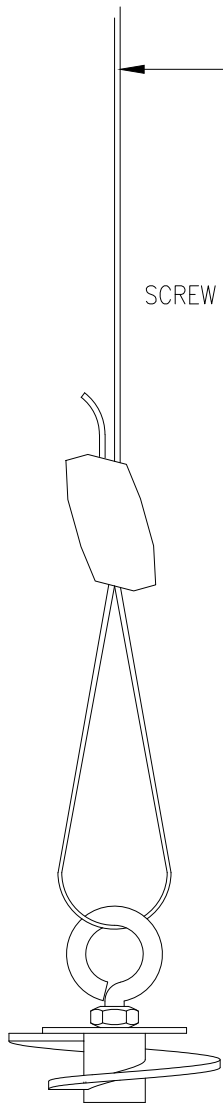
\_\_\_\_\_

\_\_\_\_\_

\_\_\_\_\_

\_\_\_\_\_

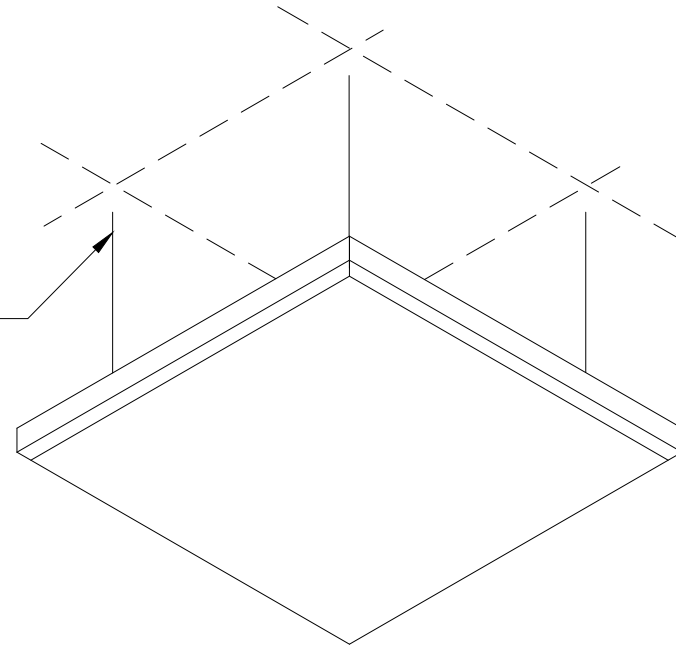
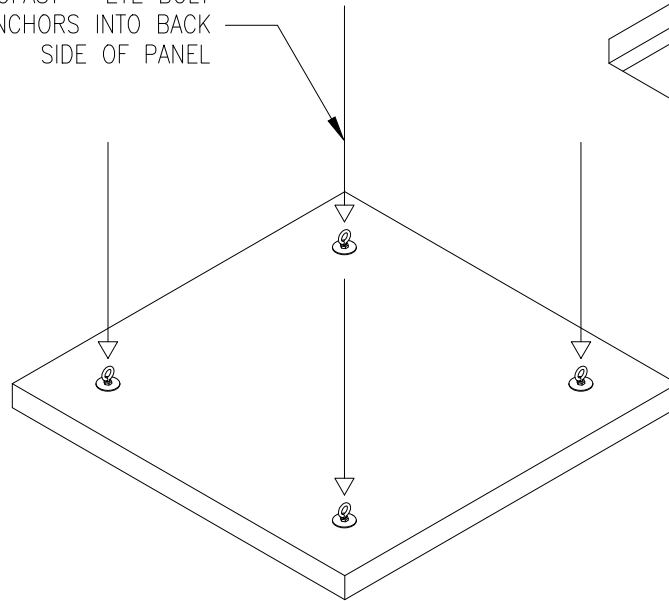
Path: F:\Project Mgmt - RPG\RPG PRODUCTS\ALL PRODUCTS DRAWING\BADP\_BAD Panel\1 - Autocad Drawings\Mounting\B.A.D Mounting.R1



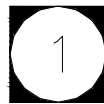
SUSPENSION  
BY OTHERS

HANG PANEL ON  
APPROPRIATE  
WIRE/CABLE

SCREW ROTOFAST™ EYE BOLT  
ANCHORS INTO BACK  
SIDE OF PANEL



| QTY./LENGTH |     |     |     |     |
|-------------|-----|-----|-----|-----|
|             | 24" | 48" | 72" | 96" |
| 24"         | 4   | 4   | 6   | 8   |
| 48"         | 4   | 4   | 6   | 8   |
| 72"         | 6   | 6   | -   | -   |
| 96"         | 8   | 8   | -   | -   |



# B.A.D. PANEL MOUNTING

SCALE: 1"=1'-0"

OPTION #3



99 SOUTH STREET, PASSAIC, NJ 07055

(p) 973-916-1166 (e) estimating@rpgacoustic.com

Title: RPG B.A.D. PANEL MOUNTING  
# 3 ROTOFAST EYELET

Proj: RPG PRODUCT

Date: 8/19/22

By: CNN

Scale: NTS

Comments:

---



---



---

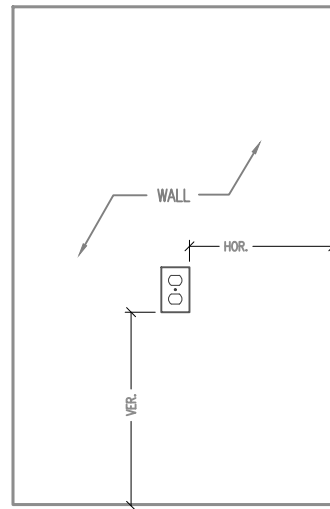
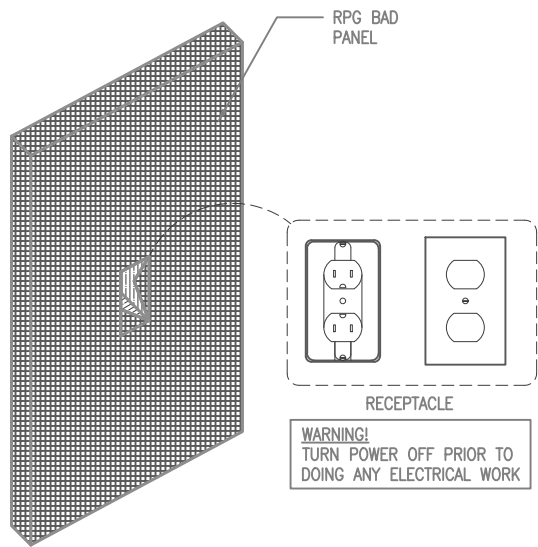


---



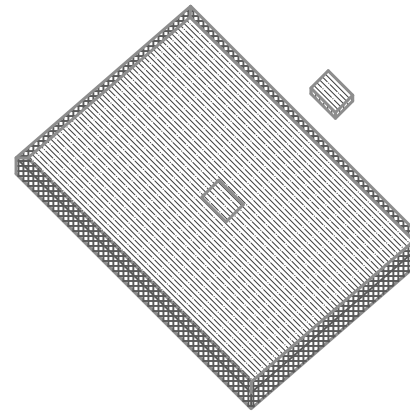
---

Path: F:\Project Mgmt - RPG\\_\_RPG PRODUCTS\ALL PRODUCTS DRAWING\BADP\_BAD Panel\2 - PDF Drawings\Mounting



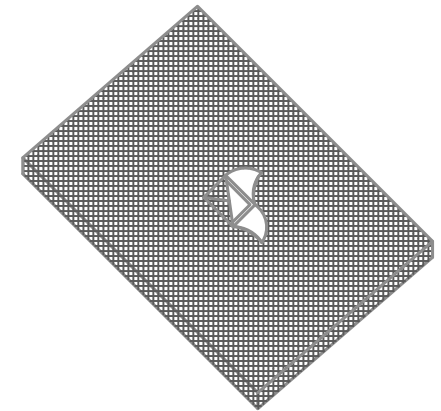
MEASURE LOCATION OF RECEPTACLE ON THE WALL AND TRANSFER DIMENSIONS TO THE BACK OF THE PANEL. ADD 1/16" TO ALL SIDES FOR ADDITIONAL CLEARANCE.

(BACK OF PANEL)

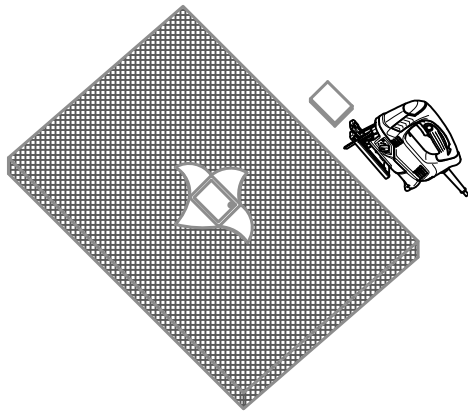


USING A RAZOR KNIFE, REMOVE THE FIBERGLASS FROM WITHIN THE OUTLINE FOR THE RECEPTACLE.

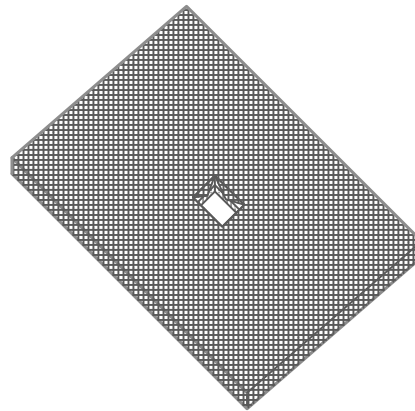
(FRONT OF PANEL)



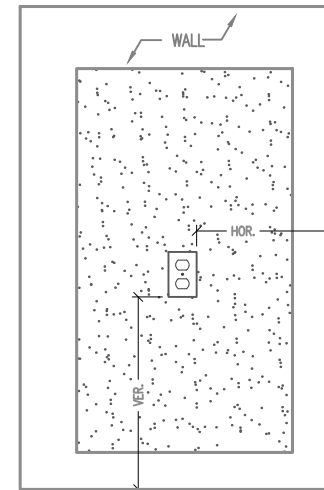
TRANSFER CUTOUT DIM. TO FRONT OF PANEL. CUT AN "X" IN FABRIC THEN PULL BACK THE FLAPS.



FOR INTERNAL CUT WITH JIG SAW, PRE-DRILL A STARTING HOLE 12MM OR MORE IN DIAMETER THEN CAREFULLY CUT THE ACOUSTIC BOARD TEMPLATE.



SHIELD FRONT OF PANEL TO PREVENT ANY ADHESIVE OVER SPRAY, SPRAY FABRIC WITH SUPER 77 ADHESIVE OR EQUIVALENT. PULL FLAPS THROUGH OPENING AND ADHERE TO SIDES OF PANELS CUTOUT.



ATTACH MODIFIED PANEL TO WALL. PANEL SHOULD CLEAR RECEPTACLE EXTENSION. INSTANT A LARGER THAN ORIGINAL RECEPTACLE COVER AND RESTORE POWER.



99 SOUTH STREET, PASSAIC, NJ 07055  
(p) 973-916-1166 (e) estimating@rpgacoustic.com

Title: BAD PANEL FIELD CUT OUT  
ELECTRICAL CUT AND RE-WRAP DETAIL

Proj: RPG PROJECT

Date: 08/19/22

By: CV

Scale: NTS

Comments:

---



---



---

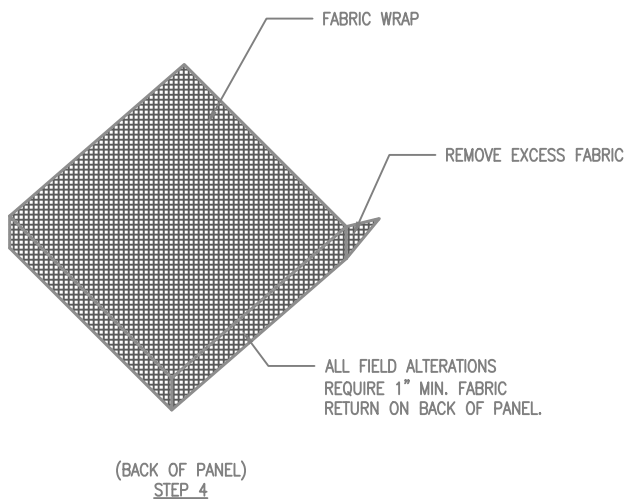
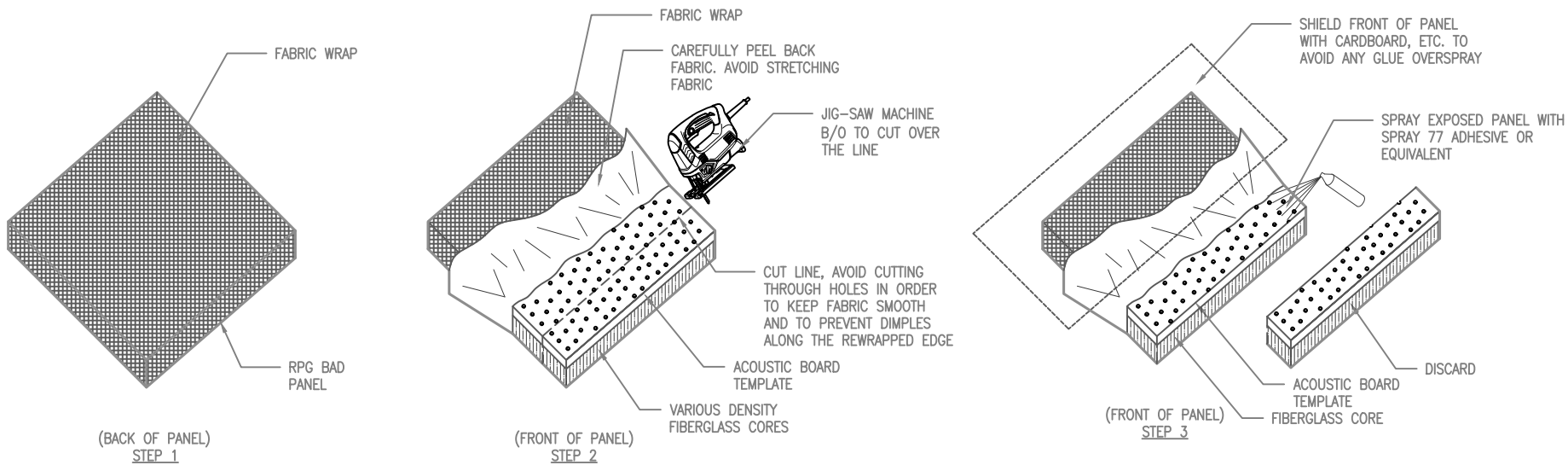


---



---

Path: F:\Project Mgmt - RPG\\_\_RPG PRODUCTS\ALL PRODUCTS DRAWING\BADP\_BAD Panel\2 - PDF Drawings\Mounting



**INSTRUCTIONS:**

1. CAREFULLY PEEL FABRIC BACK PAST CUT LINE. USE HEAT GUN TO AID IN THE RELEASE OF ADHESIVE.
2. CUT PANELS AS NEEDED. USE JIG-SAW MACHINE TO CUT FIBERGLASS CORE AND ACOUSTIC BOARD TEMPLATE. DO NOT CUT FABRIC.
3. COVER FRONT OF PANEL TO AVOID OVER SPRAY. SPRAY EXPOSED ACOUSTIC BOARD AND FIBERGLASS CORE WITH SUPER 77 ADHESIVE OR EQUIVALENT.
4. STRETCH FABRIC BACK ACROSS PANEL. PINCH EXCESS FABRIC TOGETHER WITH FINGERS AND CUT OFF FLAP WITH SCISSORS.



99 SOUTH STREET, PASSAIC, NJ 07055  
(p) 973-916-1166 (e) estimating@rpgacoustic.com

Title: BAD PANEL FIELD TRIM  
CUT AND RE - WRAP DETAIL

Proj: RPG PROJECT

Date: 08/19/22 By: CNN Scale: NTS

Path: F:\Project Mgmt - RPG\\_\_RPG PRODUCTS\ALL PRODUCTS DRAWING\BADP\_BAD Panel\2 - PDF Drawings\Mounting

Comments:

---



---



---



---



---