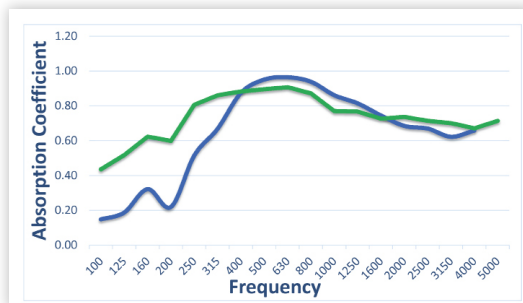


Expo™ Cells Panel



HYBRID

WALLS & CEILINGS



Blue = Expo Panel + 1", 6lb/ft³ fiberglass board -
NRC = 0.75, SAA = 0.75

Green = Expo Panel + 2", 6lb/ft³ fiberglass board -
NRC = 0.80 SAA = 0.80

Additional test data is available – please see the Supplementary Acoustical Data Charts online or contact your local RPG Sales Representative.

Frequency (Hz)	W/2", 6lb/ft ³ Fiberglass Insul.
100	0.44
125	0.52
160	0.62
200	0.60
250	0.81
315	0.86
400	0.88
500	0.90
630	0.91
800	0.87
1000	0.77
1250	0.77
1600	0.73
2000	0.74
2500	0.71
3150	0.70
4000	0.67
5000	0.71
NRC	0.80
SAA	0.80

PRODUCT OVERVIEW

The **Expo™ Cells Panel** is the ultimate synergy between acoustical technology and architectural panel design using an optimal binary pattern of linear perforations. They are available in a high recycled content, ULEF, Class A fire-rated ULEF and FSC®-certified wood panel MDF core with an optional black fleece backer. The **Expo™ Cells Panel** achieves an excellent balance of sound absorption across the NRC frequency bands while preserving the space's ambiance with high-frequency diffusion.

SIZING

- Standard Panel: 4' W x 8' L x 3/4" T
- Maximum Panel: up to 5' W x 12' L may be available (Custom panel widths and lengths are available)
- Perforation Panel Styles: Cells (shown), Code, 45, Galaxy and Standard. Custom profiles available upon request.
- Open Area: Approx. 21%
- Planks with T & G long edges can be provided in lieu of panels. Plank widths to be finalized during the submittals process.
- Each panel weighs approx. 2.00 lbs/ft²

CORE FIRE RATING

Class A (per ASTM E-84)

FINISH

The **Expo™ 45 Panel** is available in natural and engineered wood veneers and laminates with clear lacquer or factory color-matching of wood finishes and paint colors. Standard species include Alder, Anigre, Ash, Birch, Cherry, Mahogany, Maple, Poplar, Red Oak, Walnut and White Oak. Custom species may be available on request.

Black MDF core is available for larger perforation options.

INSTALLATION

Mounting options for the **Expo™ Cells Panel** include wall systems (Z-clips, direct screw attached), either surface-mounted or with a variety of cavity depths starting at 1-3/4" total system depth, and ceilings systems with options (Torsion Springs for downward access, RPG C-clips for lift and shift access, direct screw attached) for standard 15/16" HD T-grid supplied by others.

