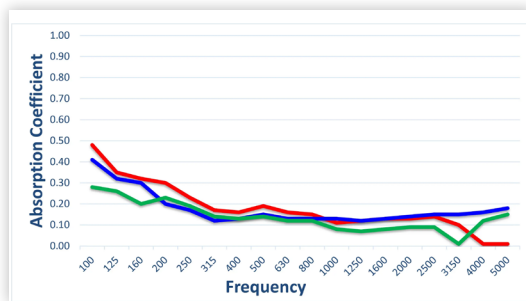


# Golden Pyramid™ G



DIFFUSION

WALLS & CEILINGS



Blue = 4'x4' E-Mount Absorption Coefficient - NRC=0.15, SAA=0.15  
Green = 4'x4' A-Mount Absorption Coefficient - NRC=0.15, SAA=0.15  
Red = 2'x2' E-Mount Absorption Coefficient - NRC=0.20, SAA=0.17

Additional test data is available – please see the Supplementary Acoustical Data Charts online or contact your local RPG Sales Representative.

Frequency (Hz)	2'x2' E-Mount Absorption Coefficient
100	0.48
125	0.35
160	0.32
200	0.30
250	0.23
315	0.17
400	0.16
500	0.19
630	0.16
800	0.15
1000	0.11
1250	0.12
1600	0.13
2000	0.13
2500	0.14
3150	0.10
NRC	0.20
SAA	0.17

## PRODUCT OVERVIEW

Pyramidal-shaped ceiling units redirect portions of the incident sound energy in different directions. While redirection is not true diffusion, the pyramidal shape offers a moderate amount of acoustic control, preventing excessive harshness and flutter and providing a more uniform sound distribution. Constructed of rigid, non-combustible glass fiber reinforced gypsum (GFRG), RPG's **Golden Pyramid™ G Tile** offers superior performance over other manufacturers' thinner, lightweight plastic models that can resonate and provide unwanted absorption.

## SIZING

Standard Panels:

- 23-3/4" W x 23-3/4" L x 8-1/4" D (2' x 2' nominal)
- 47-7/8" W x 47-7/8" L x 12" D (4' x 4' nominal)
- Material Thickness: 1/8" nominal GFRG
- Each panel weighs approx. 1.5 lbs/ft<sup>2</sup>

## FIRE RATING

Non-Combustible

## FINISH

The **Golden Pyramid™ G Tile** comes in a natural/raw GFRG finish required to be painted on-site or factory color-matched to any paint color specification.

## INSTALLATION

The **Golden Pyramid™ G Tile** is designed to drop into a standard 15/16" HD T-grid supplied by others. The panels can also be ceiling or wall-mounted using RPG provided trims.

Note: Previously Golden Pyramid™

