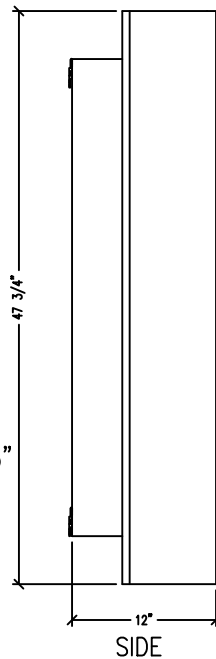
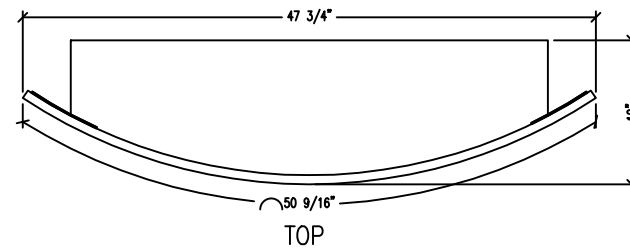


ISOMETRIC

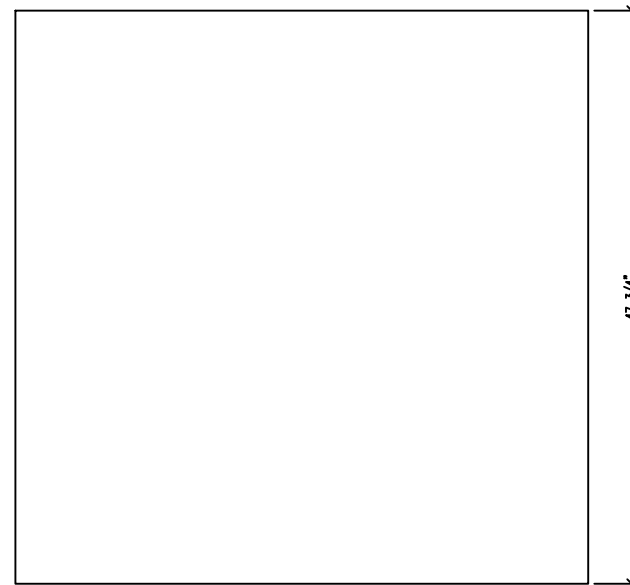
WFGW – WFMW (1) 4X4
 PARTS FROM 3/4" MDF
 FACE 1 PC. @ 47.75"X47.75"
 TOP/BOTTOM 2 PCS. @ 11.25"X38.25"
 SIDES 2 PCS. @ 6.70"X39.75"
 RIB 1 PCS. @ 11.25"X38.25"
 SPACERS 2 PC. @ 11.25"X18.25"
 SUPPORTS 2 PCS @ 3"X38.25"
 STABILIZER 5.125"X5.125"4 PCS
 Z-CLIPS 4 PCS



SIDE



TOP



FRONT



99 SOUTH STREET, PASSAIC, NJ 07055
 (P) 973-916-1166 (E) estimating@rpgacoustic.com

Title: **RPG WFGW- WFMW (1) 4X4 CUTSHEET**

Proj: **RPG PRODUCT**

Date: **8/24/22** By: **JLP** Scale: **N15**

Path: **F:\Project Maint - RPG\RPG PRODUCTS\ALL PRODUCTS DRAWING\WFMW_Waveform Monoradial W\I-AutoCAD Drawings\Cutsheet\WFMW -CS-(1) 4x4.R1**

Comments:
